

Flexsim

3D SIMULATION SOFTWARE



simply incredible

incredible power, flexibility, and ease of use

We call it

Flexsim plicity...

Flexsim is the world's leading simulation software for modeling, visualizing, analyzing, and optimizing both discrete-event and continuous-flow processes. Widely used by Fortune 500 companies to simulate manufacturing and material-handling, Flexsim can model virtually any process, ranging from service industries to traffic flow to biological growth to office workflow to the modeling of completely abstract concepts.

Flexsim helps you pinpoint bottlenecks in current systems and model proposed new systems to increase efficiency and save massive amounts of time and capital. By running multiple scenarios, you can discover how to maximize your system's potential. The optional OptQuest® which can intelligently suggest optimized scenarios, automates this process.

Models usually run in accelerated time, but can also be run in real time or in slow motion, a feature that some clients use to have Flexsim actually control their automated processes & PLC logic. Not

only does Flexsim excel in simulation, but in emulation as well.

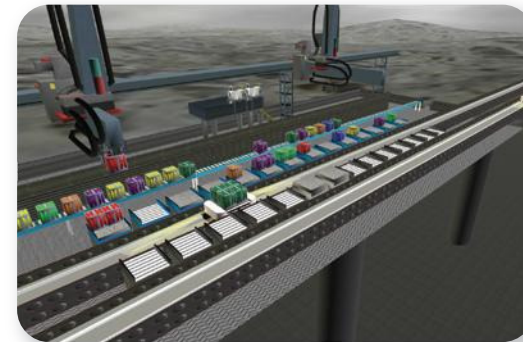
With drag-and-drop model building, intuitive controls, and comprehensive help, Flexsim allows you to get your models up and running faster than you ever imagined possible.

Fantastically powerful right out of the box, Flexsim can be easily customized: Import your own images, 3D shapes, and CAD layouts. Create your own objects or user libraries. Customize Flexsim's controls and create your own graphical user interfaces. You can create your own objects, classes, libraries, GUIs, or applications.



incredible graphics

Flexsim's stunning 3D graphics enable you to visualize and quickly understand what is going on. The standard Flexsim package includes an impressive library of 3D objects representing commonly encountered devices and equipment with fully customizable fill-in-the-blank and pick-menu controls for



setting behavior parameters. If an object is not available "off the shelf," creating your own custom 3D object is a snap.

Eye-popping presentation capabilities are built right into Flexsim, making it easy for you to communicate your findings convincingly. Place your model into one of

the supplied 3D virtual worlds, or create a fly-through animation that allows you to inspect the model from any angle. Walls, ceilings, and housings can be programmed to disappear in order to reveal the inner workings of your model.

Flexsim uses OpenGL, the same graphics library used in today's hottest 3D games. Realistic spatial relationships, dynamic lighting, environmental effects, and more, help make your models as vibrant and realistic as you want.

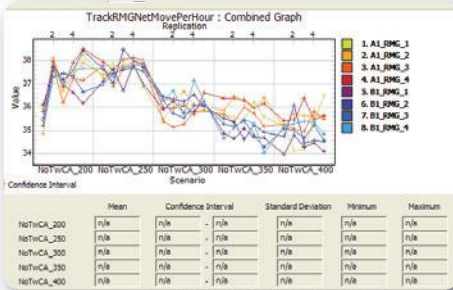
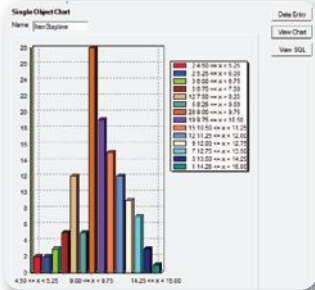
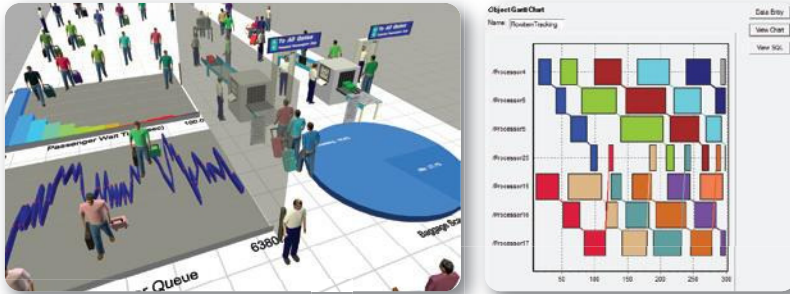
Flexsim's pervasive 3D graphical environment makes all other simulation products look downright primitive by comparison. Since all of Flexsim's graphics are native 3D, no post rendering is required to generate 3D models.



incredible analysis/reporting/presentation features

Flexsim automatically tracks and presents statistics on relevant data such as throughput, content, machine state, utilization, and cost.

The program includes its own charting software, Flexsim Chart, to create graphs and reports from your simulation results. Dynamic 3D charts and graphs can even be placed directly in the model, allowing you to quickly and clearly see what is happening in your simulation.



ExpertFit, a statistical curve-fitting program, is included in all packages to help shape your collected data into the best possible probability distribution. ExpertFit will turn your data into a powerful, predictive, statistical equation that can be used in your Flexsim simulation.

For added ease of use, Flexsim can import data from and export data to all the most popular spreadsheet and database applications.

incredible versatility

At the heart of Flexsim is the modeling engine. Libraries of objects are then built to run on that engine. The versatility and robustness of the standard version of Flexsim make it ideal for such processes as manufacturing, material handling, packaging, logistics, and more. In addition, two specialized versions have been developed with libraries tailored to the specific needs of container terminal ports and health care providers.



Flexsim

Experience the predictive power of simulation with experimentation and optimization. Flexsim is the most powerful tool for modeling, analyzing, visualizing, and optimizing any imaginable process—from manufacturing to supply chains, abstract examples to real world systems, and anything in between.



Flexsim CT

Find ways to move more containers more efficiently and at less cost. Justify improvements by testing them with simulation. Whether planning a greenfield port project or fine-tuning existing container terminal TOS parameters, Flexsim CT offers the foresight to plan effectively for current or future needs.



Flexsim HC

Designed specifically for medical professionals, Flexsim HC helps you streamline patient flow, plan facility layout, optimize your emergency room, and much more. Medical facilities are among the most complex systems in the world. Flexsim HC will help you manage and improve yours.

If you would like our engineers, who know Flexsim's capabilities and inner workings better than anyone else, to develop for you a customized version ideally suited to your needs, we will be glad to contract for that.

Or, if you prefer to leverage the power of Flexsim without having to have your personnel trained how to use the software, we are happy to contract to create models for you. After all, we use the easiest, most powerful tool on the market!

incredible support

We are committed to getting you up and running with Flexsim as quickly as possible. You'll appreciate Flexsim's context-sensitive help buttons on every graphical interface, automatic command completion tips, and comprehensive command documentation.

As easy as Flexsim is to learn, it still takes some time. We regularly offer hands-on training workshops at our headquarters in Orem, Utah. Or we can send a technician to train your people at your site.

In addition, Flexsim users can share tips and tricks, get modeling advice, or ask for help at the Flexsim Community Forum. Our worldwide user base is active and welcomes simulation newcomers. Users, both new and expert, engage in discussions about all aspects of simulation and Flexsim simulation software. Technical support staff and Flexsim developers frequently lend an insider's insight to the discussions.



incredible technology

While other simulation packages try to make the best of 1980s and early 1990s technology, Flexsim fully leverages the power and versatility of 21st-century technology to make it easy to handle the challenges of 21st-century process modeling.

Already a decade ahead of the competition technologically, we are pleased to announce our latest innovation, Flexsim DS. DS features a distributed processing environment, allowing you to build and network models at different locations to run simulations of unprecedented complexity.

You'll never have to throw your hands up in frustration because Flexsim can't do something. Flexsim's open architecture and integration with the most powerful and widespread programming language available, C++, means that Flexsim can be extended with any functionality imaginable.

Flexsim has a very capable library of class objects that can be used right out of the box to build a variety of different models quickly with no programming required. Where more complicated or customized behaviors are called for, all Flexsim objects can be extended with the use of trigger logic. In addition, the source code for all classes in the library is open to the user to see and use freely. Users can create their own custom objects from scratch, or use existing library objects as a starting point.

You don't have to be a C++ programmer to make the most of Flexsim's flexibility. If all the preconfigured picklist options that come standard aren't enough to meet your needs, you can customize objects further using Flexsim's simple scripting language, FlexScript.

Where you meet a brick wall with other simulation software packages, Flexsim gives you a door.

system requirements

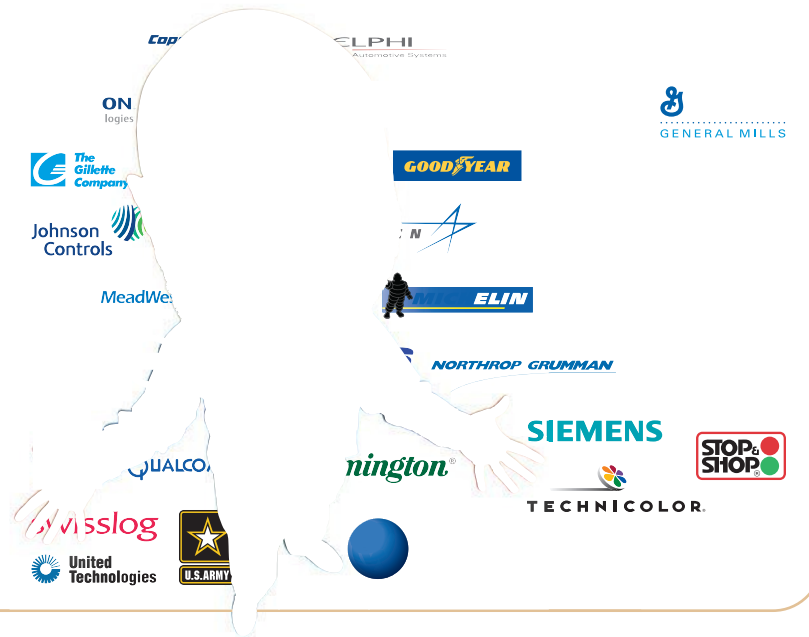
	RECOMMENDED	MINIMUM
Processor	Intel Core 2 Duo or AMD Athlon 64 X2 or better	Intel Pentium 4 or AMD Athlon XP
System Memory	1 GB RAM or more	256 MB RAM
Graphics Card	NVIDIA GeForce 6 series or higher	64 MB OpenGL compatible graphics card
Operating System	Microsoft Windows XP or Vista	
Additional Software	.NET Framework ¹ , Visual C++ ²	

1. **REQUIRED** Flexsim uses functionality provided by Microsoft's .NET framework version 2.0 or higher. The .NET framework is already installed on most computers. It can be freely obtained from Microsoft Windows Update, or as a standalone download directly from Microsoft.

2. **OPTIONAL** Microsoft's Visual C++ can be used in conjunction with Flexsim to build compiled models or enhance system level functionality (OS, network, etc.). These features are optional, however. Flexsim does not require a compiler to build or run simulation models. Microsoft's Visual C++ Express Edition is a free download from Microsoft Corporation.

incredible popularity

Our client list reads like a Who's Who of leading companies in a wide range of industries, a tribute to how Flexsim helps successful companies succeed even more. When you're running Flexsim, you're in good company. Isn't it time to make Flexsim part of *your* success story?



Flexsim Software Products, Inc.

1577 North Technology Way, Building A
Orem, Utah 84097, USA



TEL 801.224.6914
FAX 801.224.6984

sales@flexsim.com

